

# Hypertherm®

## powermax1650® G3 SERIES™

### Hand torch parts

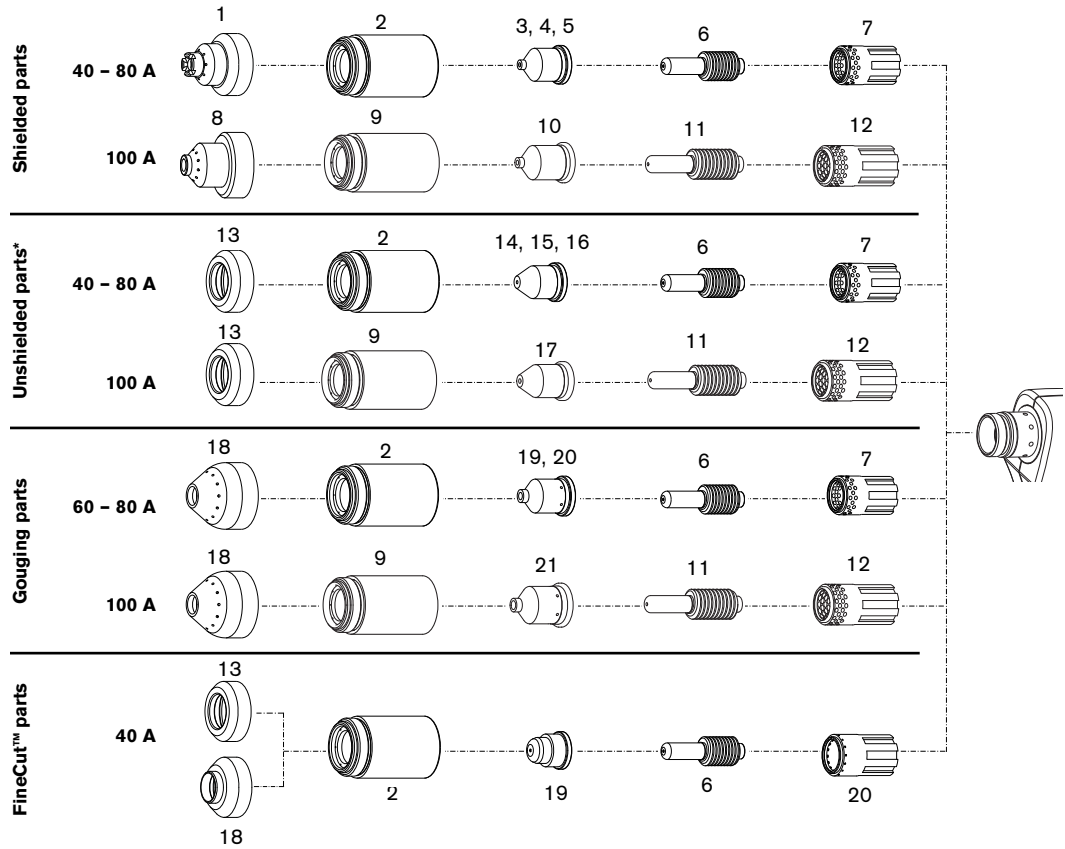
#### T100 consumables



Powermax1650



T100 torch



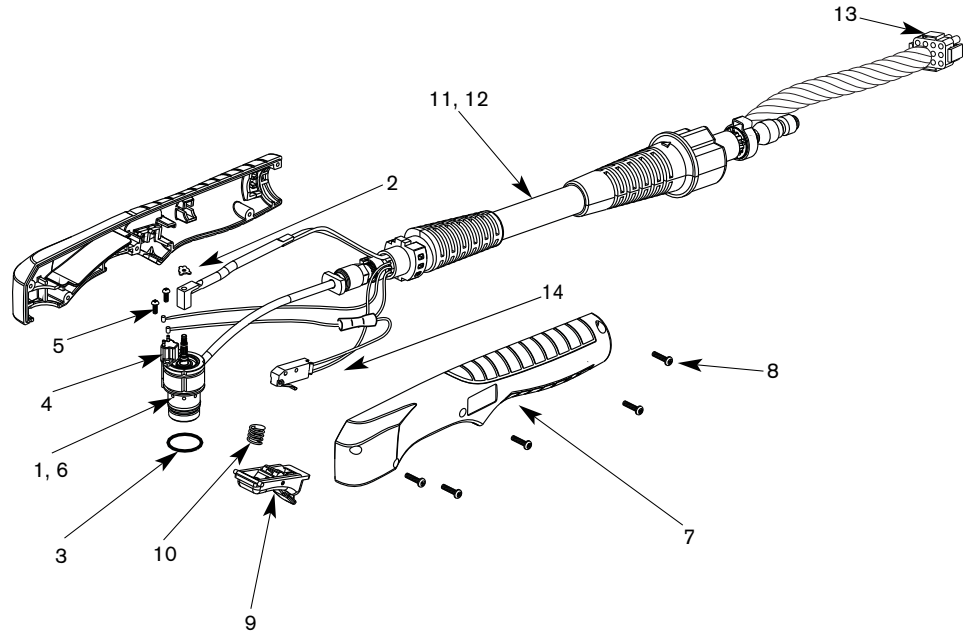
	100 AMP		80 AMP		60 AMP		40 AMP		QUANTITY PER PACKAGE	
	ITEM NUMBER	PART NUMBER	ITEM NUMBER	PART NUMBER	ITEM NUMBER	PART NUMBER	ITEM NUMBER	PART NUMBER		
Shielded parts	Shield	8	220065	1	120929	1	120929	1	120929	1
	Retaining cap	9	220048	2	120928	2	120928	2	120928	1
	Nozzle	10	220011	5	120927	4	120931	3	120932	5
	Electrode	11	220037	6	120926	6	120926	6	120926	5
	Swirl ring	12	220051	7	120925	7	120925	7	120925	1
Unshielded parts*	Deflector	13	120979	13	120979	13	120979	13	120979	1
	Retaining cap	9	220048	2	120928	2	120928	2	120928	1
	Nozzle	17	220064	16	120980	15	220007	14	220006	5
	Electrode	11	220037	6	120926	6	120926	6	120926	5
	Swirl ring	12	220051	7	120925	7	120925	7	120925	1
Gouging parts	Shield	18	120977	18	120977	18	120977	—	—	1
	Retaining cap	9	220048	2	120928	2	120928	—	—	1
	Nozzle	21	220063	20	120059	19	220059	—	—	5
	Electrode	11	220037	6	120926	6	120926	—	—	5
	Swirl ring	12	220051	7	120925	7	120925	—	—	1
FineCut™ parts	Deflector	—	—	—	—	—	—	13	120979	1
	Deflector, CE	—	—	—	—	—	—	18	220325	1
	Retaining cap	—	—	—	—	—	—	2	120928	1
	Nozzle	—	—	—	—	—	—	19	220329	5
	Electrode	—	—	—	—	—	—	6	120926	5
	Swirl ring	—	—	—	—	—	—	20	220327	1

**Genuine Hypertherm Consumables**

The only way to ensure maximum performance

**WARNING**  
 \*In countries following CE standards, shielded consumables parts must be used for hand cutting applications.  
 Unshielded consumables: maintain torch-to-work distance of approximately 3/16" (4.8 mm).

# Powermax1650 T100 safety trigger torch assembly



**T100 torch**

ITEM NUMBER	PART NUMBER	DESCRIPTION	QUANTITY
	059264^	T100 hand torch assembly with 25 ft (7.6 m) lead	
	059270^	T100 hand torch assembly with 50 ft (15.2 m) lead	
1	128767	T100 torch main body replacement kit	1
2	027889	Retaining clip	1
3	058519	O-ring	1
4	128639	Cap-off sensor replacement kit	1
5	075571	Cap-off sensor screws	2
6	128768	T100/T100M torch head repair kit	1
7	128644	Handle kit	1
8	075586	Handle screws	5
9	002244	Safety trigger	1
10	027254	Trigger spring	1
11	128755	25 ft (7.6 m) torch lead replacement kit	1
12	128752	50 ft (15.2 m) torch lead replacement kit	1
13	128638	ETR repair kit (Regional Repair Centers only)	1
14	128642	Start switch replacement kit	1

^ Assembly includes consumables

Hypertherm, Powermax, G3 Series, FineCut and PAC are trademarks of Hypertherm, Inc. and may be registered in the United States and/or other countries.

## Hypertherm®

www.hypertherm.com

**Hypertherm, Inc. USA** 603-643-3441 Tel 603-643-5352 Fax manual.info@hypertherm.com

**Hypertherm Automation USA** 603-298-7970 Tel 603-298-7977 Fax info@hyperthermautomation.com

**Hypertherm Plasmatechnik GmbH Deutschland** 49 6181 58 2100 Tel 49 6181 58 2134 Fax HTDeutschland.info@hypertherm.com

**Hypertherm (S) Pte Ltd. Singapore** 65 6841 2489 Tel 65 6841 2490 Fax HTSingapore.info@hypertherm.com

**Hypertherm (Shanghai) Trading Co., Ltd. PR China** 86-21 5258 3330 /1 Tel 86-21 5258 3332 Fax HTChina.info@hypertherm.com

**Hypertherm Branch of Hypertherm UK, LLC England** 00 800 3324 9737 Tel 00 800 4973 7329 Fax HTUK.info@hypertherm.com

**France (Representative office)** 00 800 3324 9737 Tél 00 800 4973 7329 Fax HTFrance.info@hypertherm.com

**Hypertherm Europe B.V. Nederland** 31 165 596907 Tel 31 165 596901 Fax HTEurope.info@hypertherm.com

**Hypertherm Japan Ltd.** 81 6 6170 2020 Tel 81 6 6170 2015 Fax HTJapan.info@hypertherm.com

**Hypertherm Brasil Ltda.** 55 11 2409 2636 Tel 55 11 2408 0462 Fax HTBrasil.info@hypertherm.com

**Hypertherm México, S.A. de C.V.** 52 55 5681 8109 Tel 52 55 5683 2127 Fax ventas@hypertherm.com.mx

**Australia/New Zealand (Representative office)** 61 (0) 7 3219 9010 Tel 61 (0) 7 3219 9012 Fax sales.au@hypertherm.com